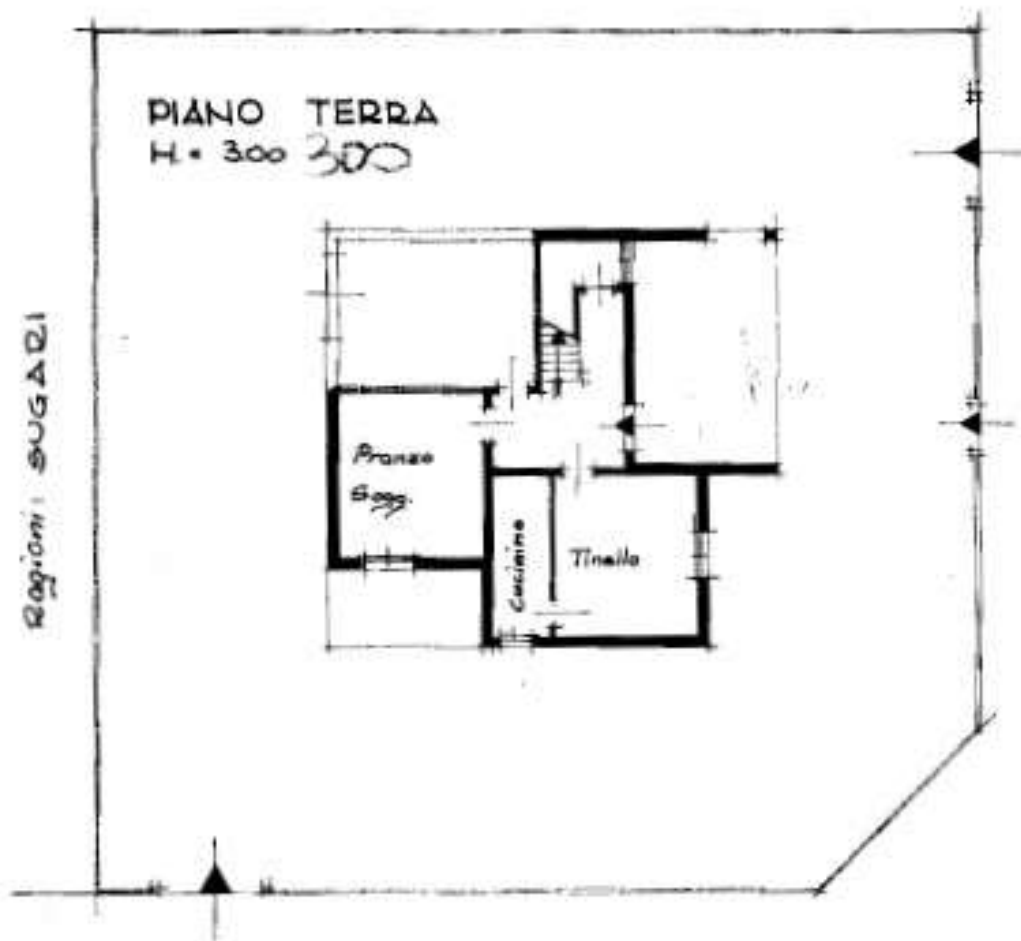


Ragioni: PRITONI

PIANO TERRA  
H. 300 300

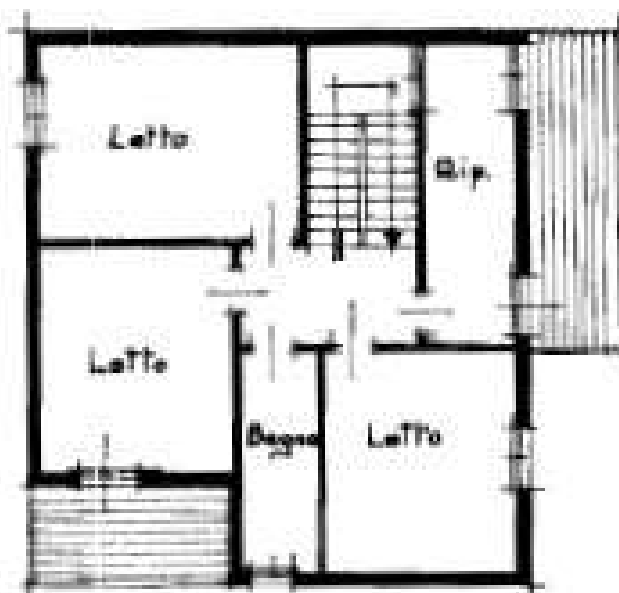
Ragioni: SUGARI



ASSE VIA REMESINA

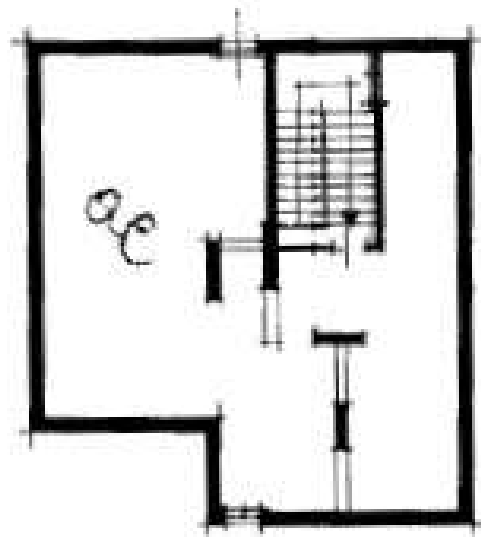
ASSE VIA ANCONA

PIANO PRIMO  
H. 300 300



PIANO SOTTOTETTO II° P.

H. in colmo 246 246  
Hr in gronda 1.03 1.03



Regioni : PRITONI

PIANO TERRA  
H. = 300

Garage

Regioni : SUGIARI

ASSE VIA REMESINA

ASSE VIA ANCONA

